

GOSLAM<sup>®</sup>

# G1 Plus Advantage

Stationary 3D Laser Scanning System



# Fusion Of High Precision And Collection Efficiency

The G1 Plus, while using the stand-mounted scanning mode, innovatively achieves the ability to stay connected even when individual stations are interrupted. The setup time for a single station is reduced, making it 30% more efficient than traditional station scanners. Moreover, it doesn't rely solely on single-station data for inter-station matching later on, which means the data traceability during post-processing is stronger, the integration between stations is better, and it can very effectively reduce layering, misalignment, or difficulties in stitching in environments where features degrade.



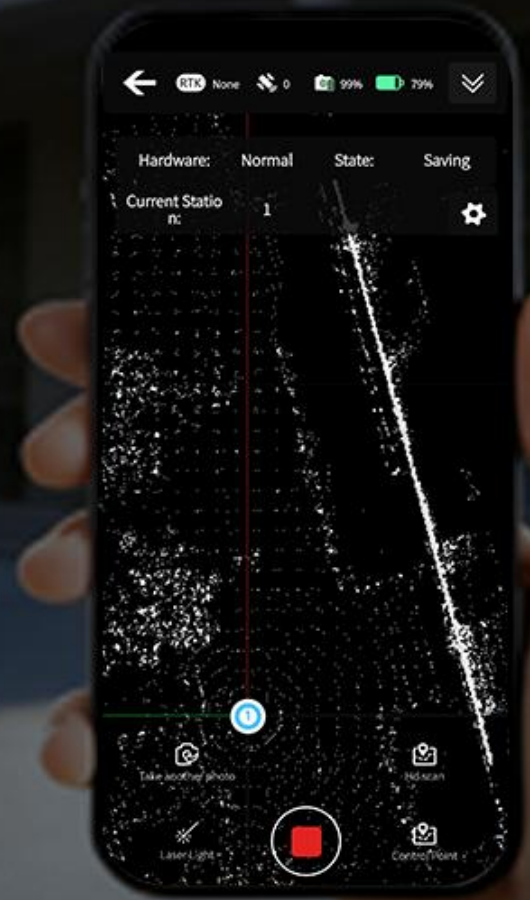
# Live Stitching Preview, No Manual Intervention Needed

The G1 Plus's ability to stay connected even when a station is down allows stations to maintain contact during relocation, enabling real-time station assembly without relying on external computing power or manual rough alignment, providing an overall view, quickly spotting missing stations, improving construction efficiency, and greatly reducing rework.



# Mobile App Interaction

The mobile app supports Android and iOS systems, allowing full control of the device, real-time monitoring of data scanning, scan control, real-time data browsing, colour module photography, scanning mode settings, data archiving, as well as PPK and RTK configuration, all in one app, making your fieldwork easy and efficient. The device also supports physical button scan control, so even with special work requirements, scanning can be completed.



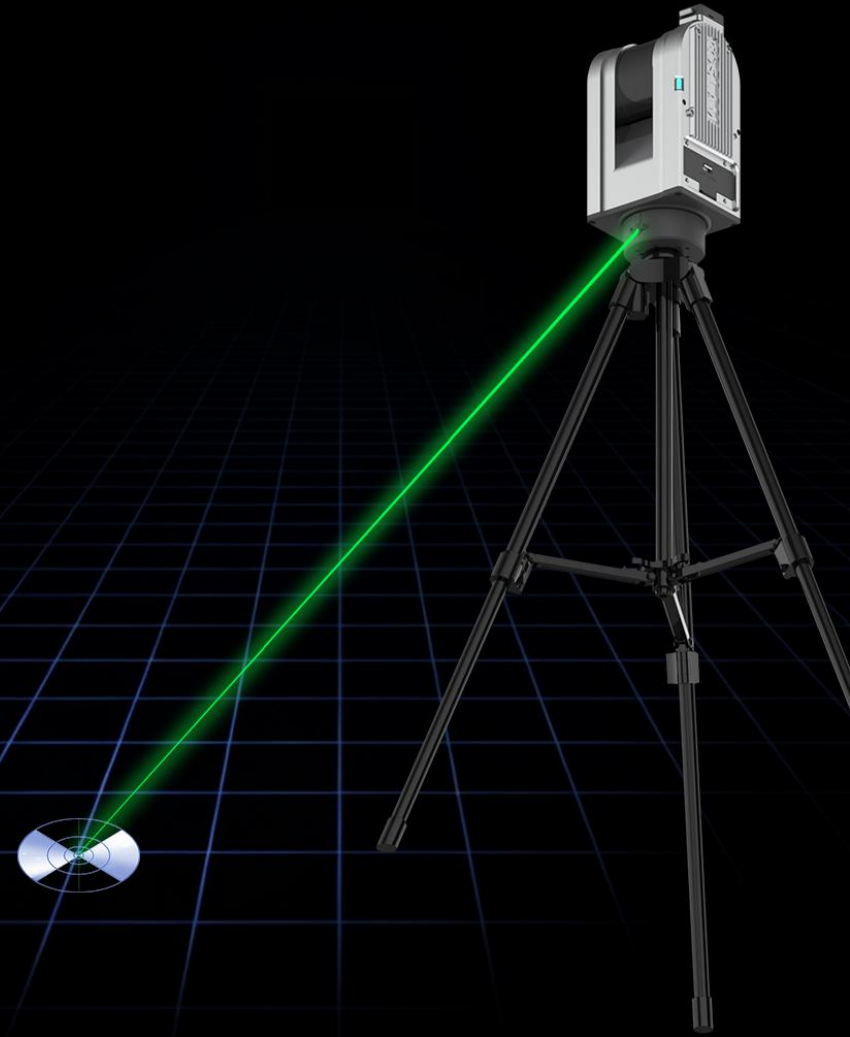
## 8K HDR Colour Module (Optional)

The colour module uses a dual 1/1.28 sensor, providing high-quality panoramic photos and supporting HDR mode, giving you more stable image references in complex lighting conditions, and it can also be used to colour point clouds, making the point clouds reflect the real scene more accurately and offering more reference for your point cloud applications.



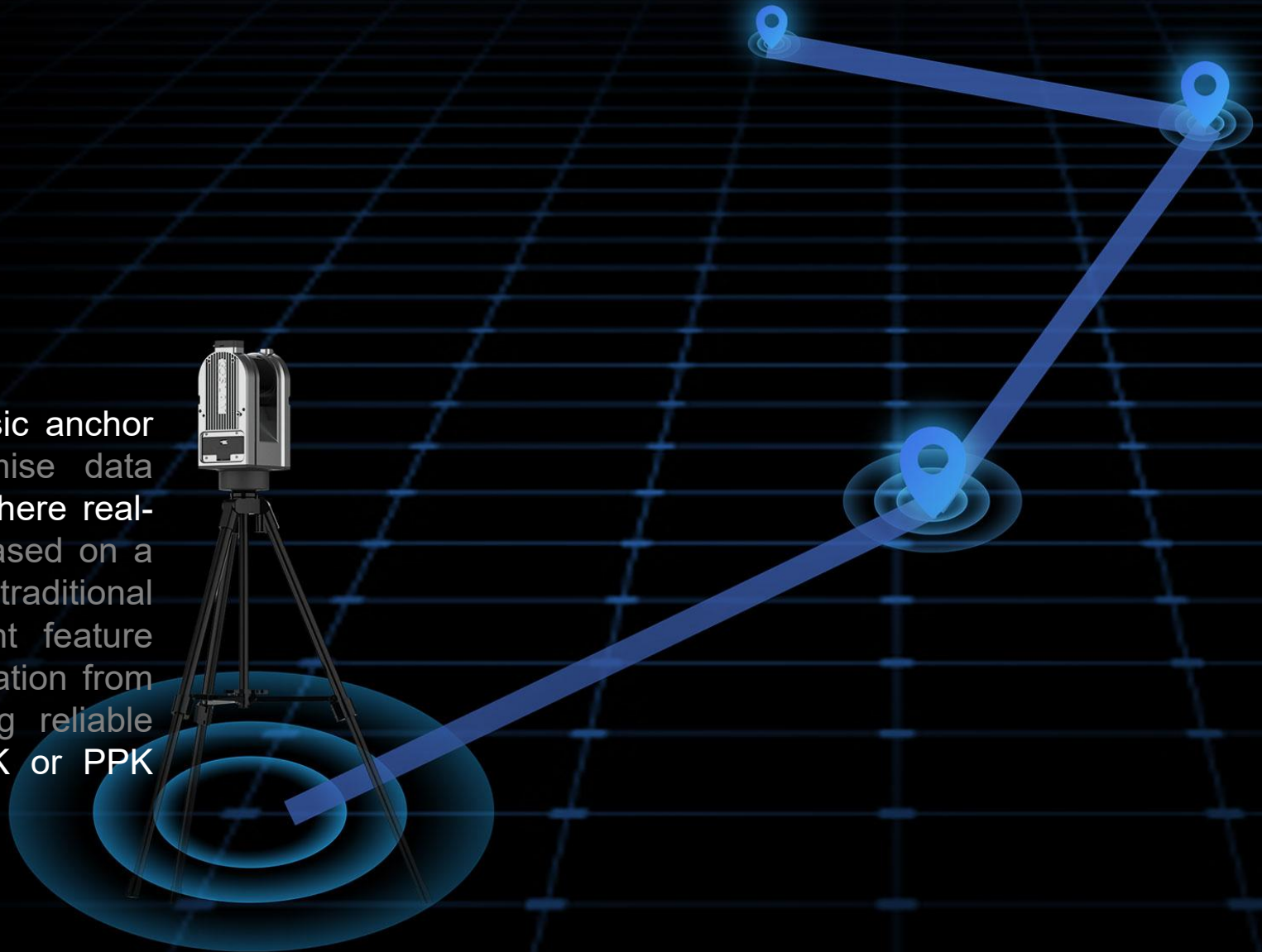
# Contactless Laser Control Point Recording

The equipment is equipped with a laser indicator, making it easy to align control points and record operations on the station device. There's no need to set up target papers and match control points through recognition methods, you can directly use the recorded control points for coordinate conversion, which is quick and easy.



# Anchor Feature Adaptation

The G1 Plus still supports GoSLAM's classic anchor point matching feature, which can optimise data accuracy for scanning tasks in scenarios where real-time positioning calibration isn't available based on a few known control points. Compared to traditional control point conversion, the anchor point feature allows for underlying data accuracy optimisation from the stitching and merging stage, providing reliable precision for point cloud data without RTK or PPK positioning support.



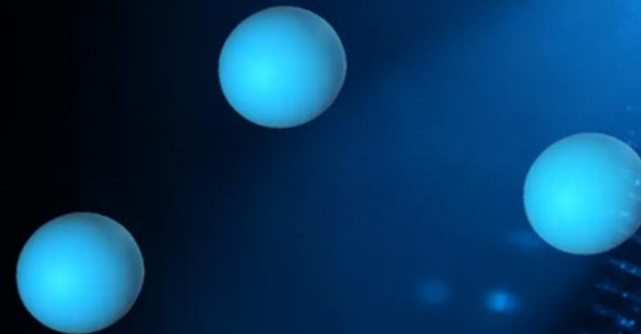
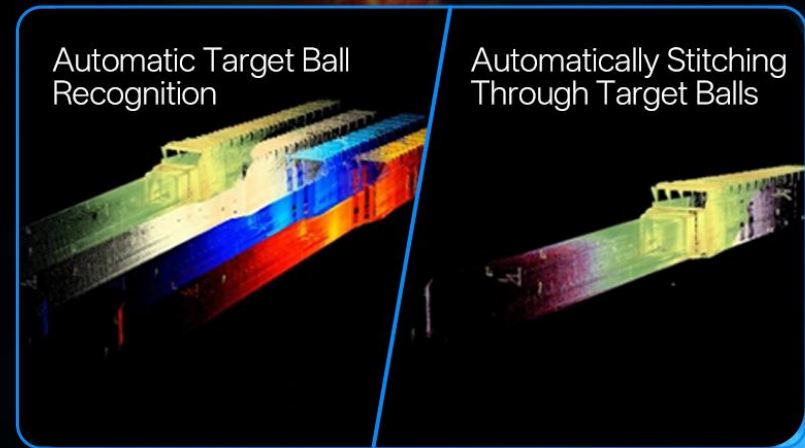
# Built-in RTK/PPK Dual-mode Positioning Module

The Device Comes With A Built-in RTK/PPK Dual-mode positioning module and a quick-mount GNSS antenna. It supports multi-constellation, multi-frequency satellite signals, has strong anti-interference abilities, and can still provide stable solution even in obstructed environments. After scanning, all data comes with high-precision absolute coordinates (large coordinates), no control points are needed, and results can be obtained directly in the field.



# Target Ball Automatic Recognition

Not afraid of low-feature environments, supports target sphere splicing technology; One-click target sphere recognition, one-click automatic splicing, Easily handling challenging environments.



# One-click Data Calculation Software Process

Equipped with desktop one-stop processing software;It supports automatic data splicing, anchor point-assisted to Optimize accuracy, moving object filtering, ppk, rtk, data Fusion, etc., to meet the needs of professional applications.



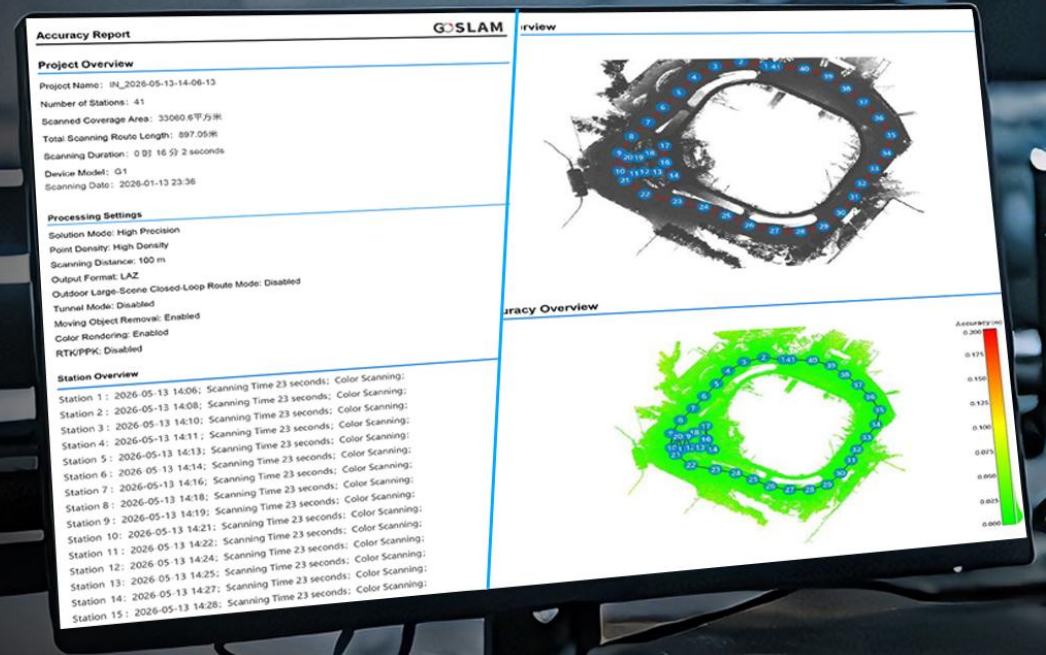
# Seamless Technology

Fully automatic stitching, no manual intervention needed; greatly lowers the entry barrier, making professional scanning easy to start. Site-to-site stitching uses laser SLAM technology, completing global registration automatically from start to finish, with data merging as you scan.



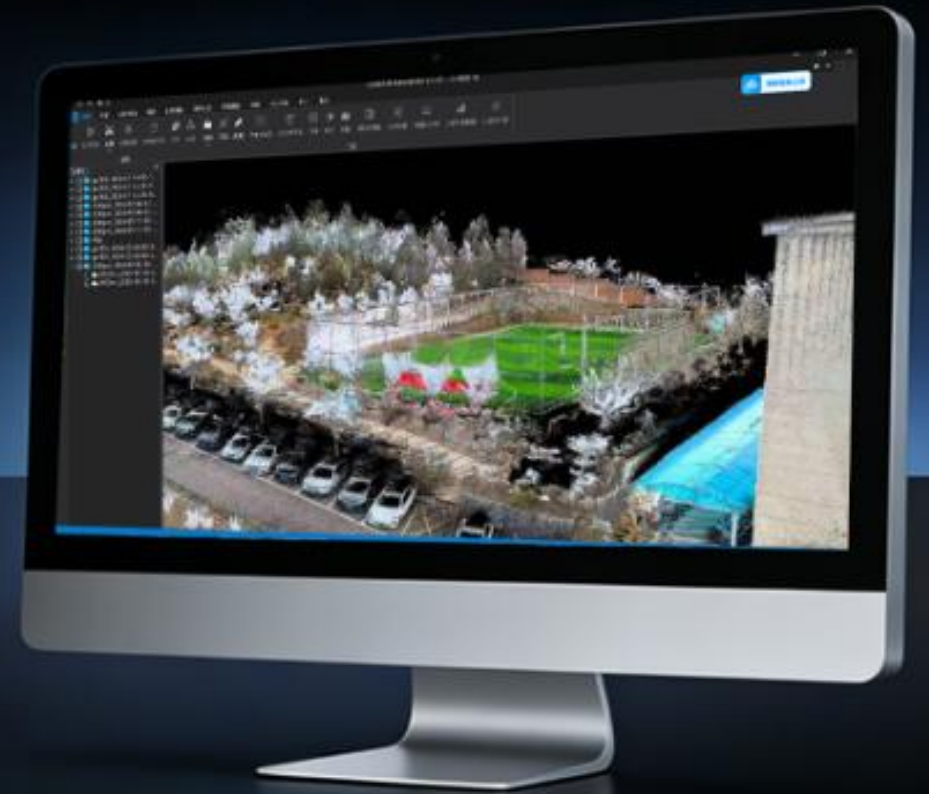
# Automatically Generate Project Overview and Site Accuracy Report

After merging and splicing, an accuracy report can be automatically generated, providing a reliable accuracy reference for the data results. All data accuracy is quantifiable and verifiable, supporting site-level accuracy backtracking and optimization, and quality is traceable throughout the entire path.



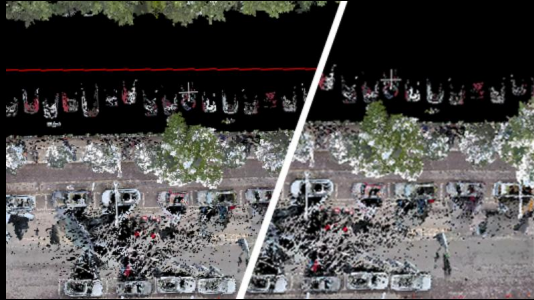
# GoSLAM LidarWorks

GoSLAM LidarWorks is a powerful point cloud editing software that supports multiple industry application modules and is compatible with the entire GoSLAM series of mobile 3D laser scanning systems.

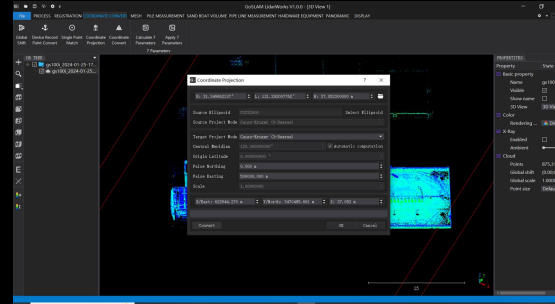


# Software Advantages

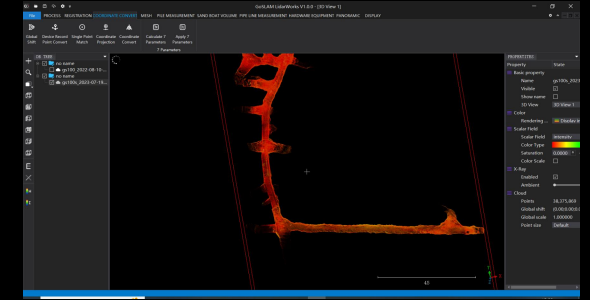
## Partial Function Display



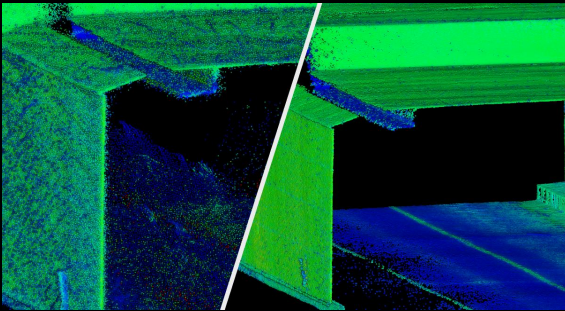
Segment



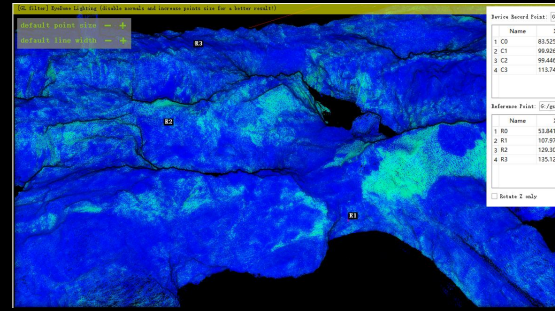
Multi Coordinate System Conversion



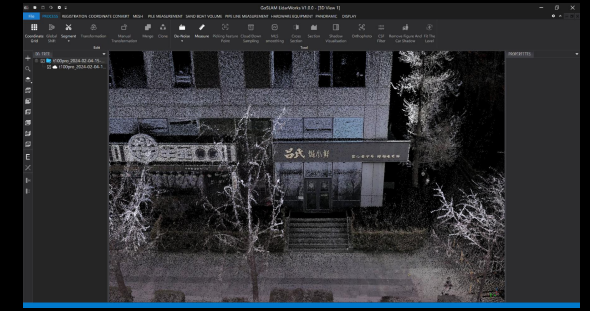
X-Ray Display Mode



Noise Reduction



Coordinate Conversion



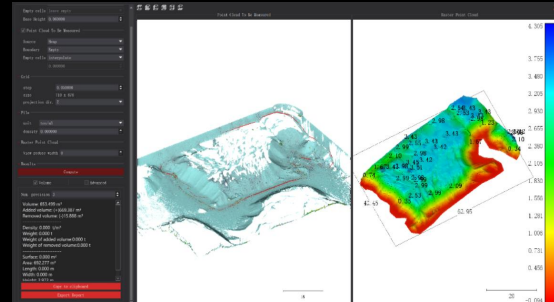
Color Point Cloud

# Software Advantages

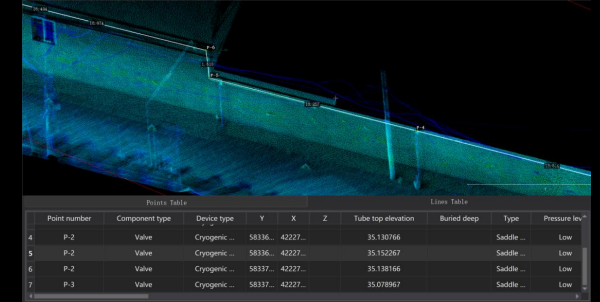
## Partial Function Display



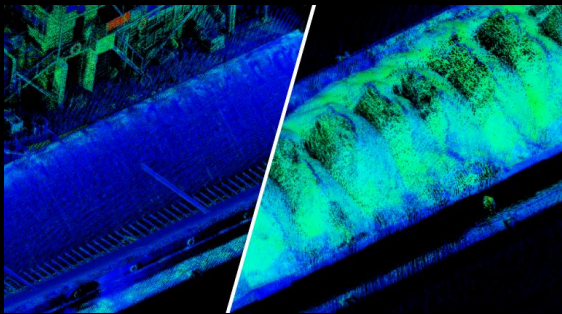
360 Panoramic Linkage



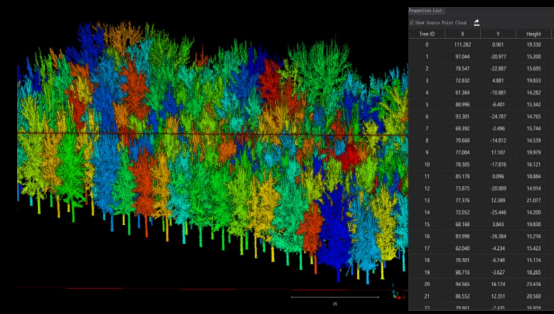
Pile Volume Measurement Module



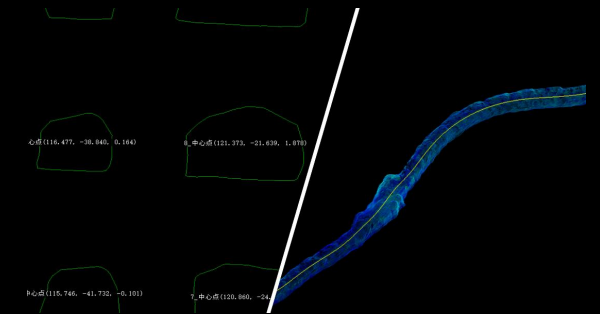
Pipeline Measurement Module



Sand Boat Measurement Module



Forestry Module



Mining Module



**GOSLAM<sup>®</sup>**

Stationary 3D Laser Scanning System